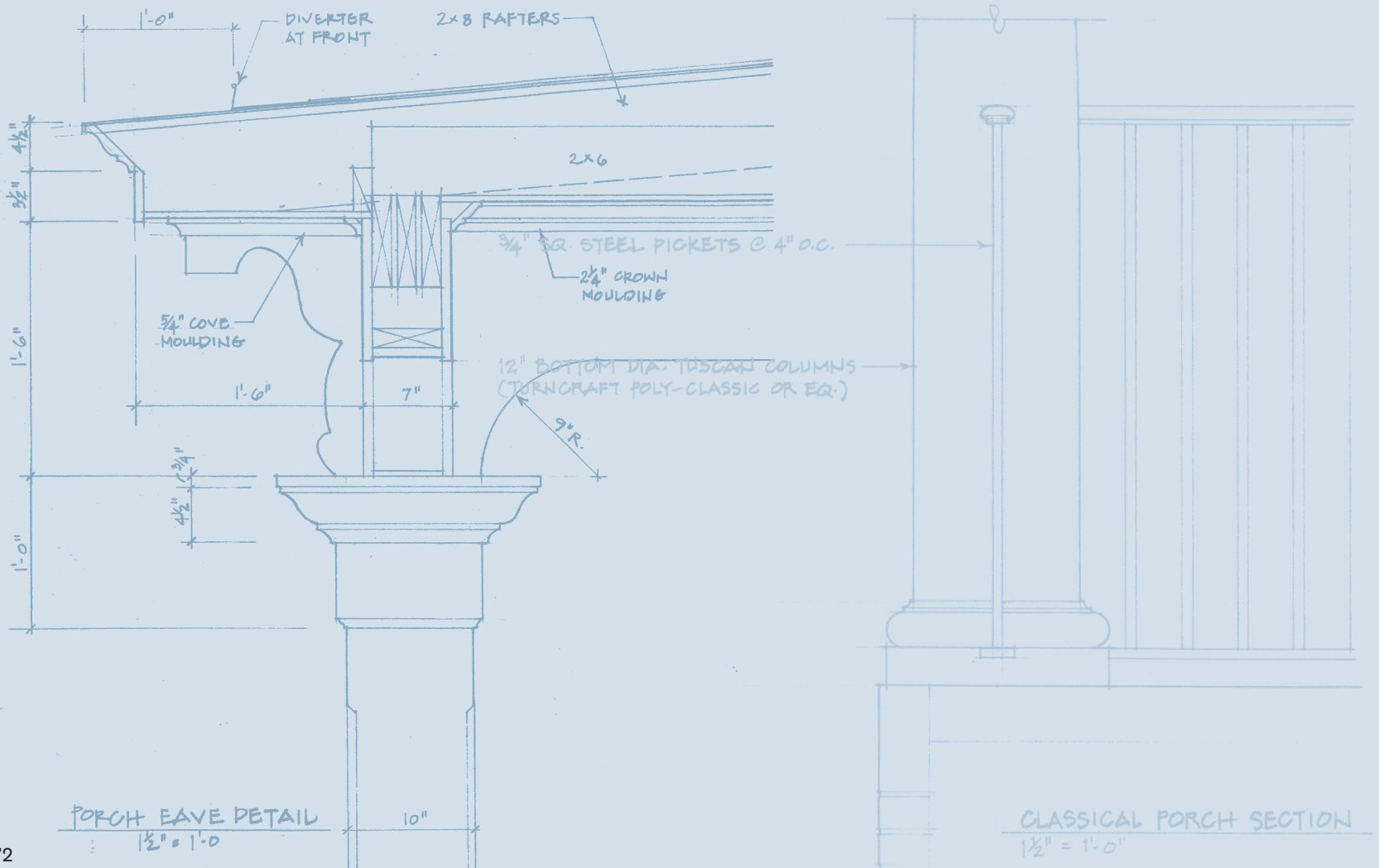


DEMONSTRATION PLANS

The patterns presented in this book are intended for use by builders, developers, and producers of manufactured housing, as well as individual home owners as they renovate and rebuild their own houses. The biggest challenge will be to communicate the values and character of Louisiana architecture to a national homebuilding industry.

To demonstrate the use of the Pattern Book, a workshop was conducted using standard plans provided by various builders. Each plan was then transformed by using the patterns in the book for a particular style. It is recommended that the green design guidelines be followed to ensure an energy-efficient house. These are illustrated in the demonstration plans by showing the standard plan and elevation (as given) alongside the modified plan and transformed elevation for that house design. The patterns in this book have been modified to meet current construction practices and include patterns with a wide range of costs.

On the following pages, we present a collection of houses, some manufactured, some using conventional wood frame, and some using the SIP panel method. These houses have been designed by various architects and are illustrative of the patterns presented in this book.



DEMONSTRATION 1:

HABITAT HOUSE

This simple, one-story cottage was modified by expanding the porch and then simply using the appropriate windows and trim elements from the Arts & Crafts section of this Pattern Book.



Original Plan and Elevation



Transformed Plan and Elevation

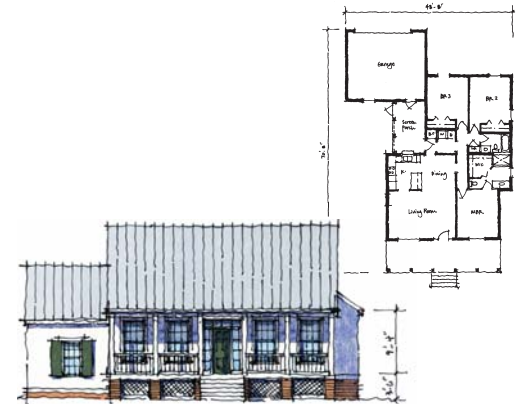
DEMONSTRATION 2:

BUILDER PRODUCTION HOUSE

This ranch style house is a standard model currently being used in Florida by a developer interested in building in Louisiana. The plans were provided to the LRA by Aercon, LLC. It was modified in plan by adjusting the garage location and the arrangement of living spaces. A porch was added. Instead of the Spanish style of the Florida model, the architectural elements from the Louisiana Vernacular section of this Pattern Book were used.



Original Plan and Elevation



Transformed Plan and Elevation

DEMONSTRATION 3:

MODULAR HOUSE

This two-story house, provided to the LRA by Integrity Building Systems, is built with four modules. Within the constraints of the manufacturer, this house was modified by adding a porch and using architectural elements from the Louisiana Victorian section of this Pattern Book.



Original Plan and Elevation



Transformed Plan and Elevation

DEMONSTRATION 4:

ROWHOUSE

These three-story, park-under rowhouses are typical models used by one of the nation's largest home builders. The only modification in plan was to rearrange the stairs on the ground level. Galleries and balconies were added. Elements from both the Louisiana Vernacular and Louisiana Classical sections of this Pattern Book were used to create two distinct elevations.



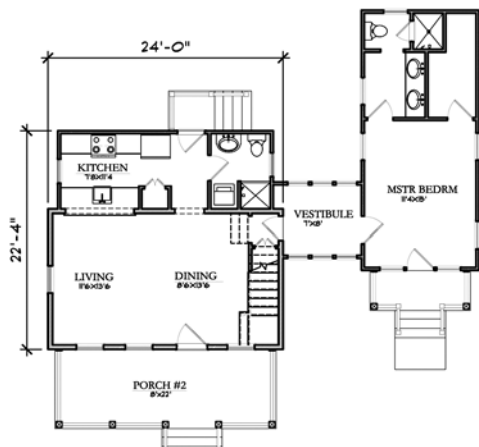
Original Plan and Elevation



Transformed Plan and Elevation



Second Floor



Floor Plan



Front Elevation

Single Family Detached House
 2025 sf
 3 bedrooms
 2 bathrooms
 Architect: Eric Moser
 info@moserdesigngroup.com



Floor Plan



Arts & Crafts Elevation



Victorian Elevation



Louisiana Vernacular Elevation

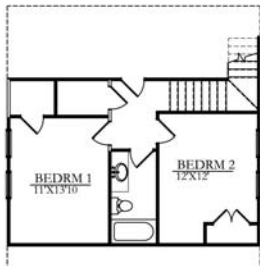
Modular Single Family Detached House
 1400 sf
 3 bedrooms
 2 bathrooms
 Architect: Stephanie Eugster
 seugster@houston.rr.com



First Floor



Side Elevation



Second Floor



Second Floor Addition



Front Elevation

Single Family Detached House

2560 sf
 3 bedrooms
 2.5 bathrooms
 Architect: Eric Moser
 info@moserdesigngroup.com



Side Elevation



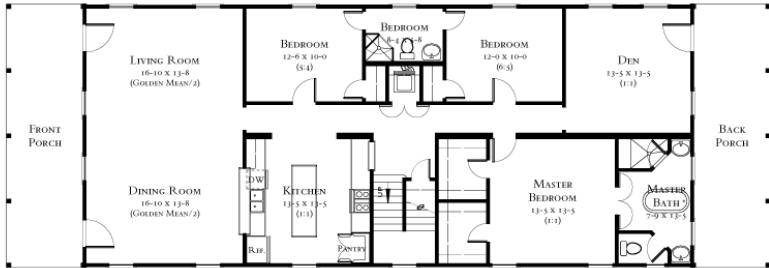
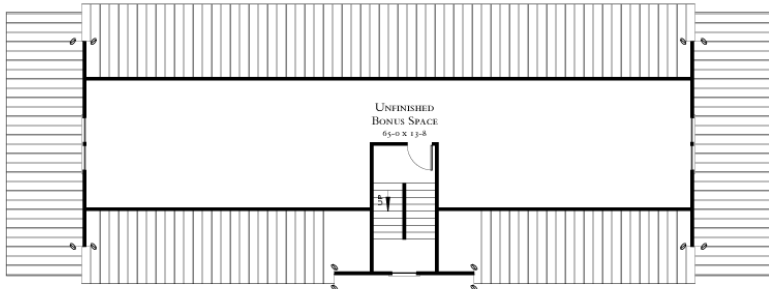
Floor Plan



Front Elevation

Single Family Detached House

512 sf
 2 bedrooms
 1 bathroom
 Architect: Marianne Cusato
 mcusato@aol.com

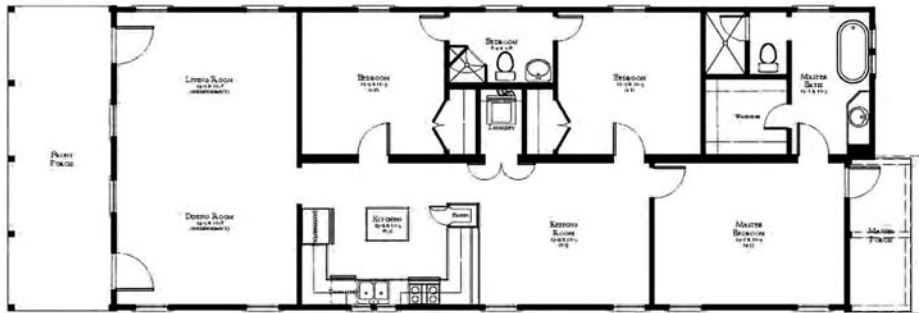


Floor Plan



Front Elevation

Single Family Detached House
 1836 sf (987 sf bonus)
 3 bedrooms
 2 bathrooms
 Architect: Steve Mouzon
www.mouzon.com

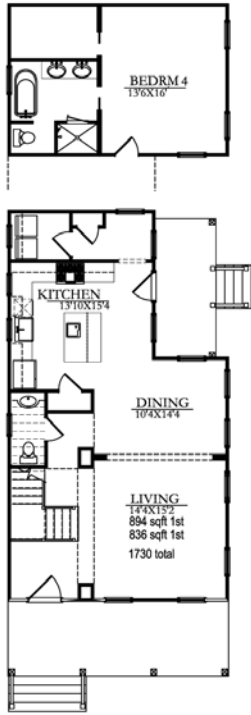


Floor Plan

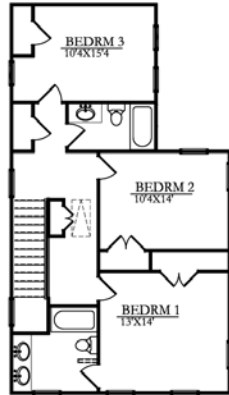


Front Elevation

Single Family Detached House
 1432 sf
 3 bedrooms
 2 bathrooms
 Architect: Steve Mouzon
www.mouzon.com



Floor Plan First Floor

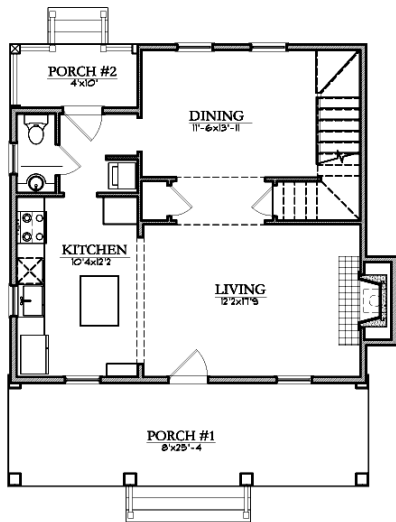


Floor Plan Second Floor

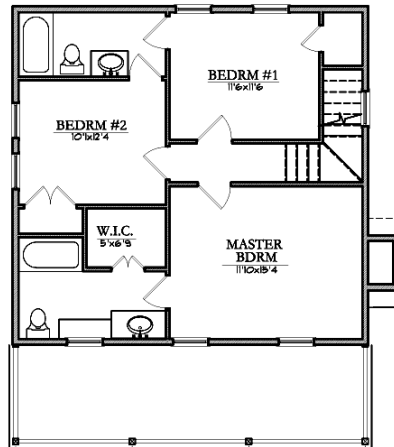


Sidewalk Elevation

Single Family Detached House
 1730 sf (390 sf additional bedroom 4)
 3 bedrooms
 2.5 bathrooms
 Architect: Eric Moser
 info@moserdesigngroup.com



Floor Plan First Floor



Floor Plan Second Floor



Sidewalk Elevation

Single Family Detached House
 1356 sf
 3 bedrooms
 2.5 bathrooms
 Architect: Eric Moser
 info@moserdesigngroup.com