



# City of Lake Charles

326 Pujo Street  
P.O. Box 900  
Lake Charles, LA  
70602-0900

## Meeting Agenda

### Planning and Zoning Commission

---

Tuesday, February 18, 2025

5:00 PM

Council Chambers

---

#### OPEN MEETING

#### ROLL CALL

#### MINUTES OF PREVIOUS MEETING

#### SPECIAL ANNOUNCEMENTS

#### COMMISSION BUSINESS

##### VAR 25-10

##### CHAPTER 24 - LAKE CHARLES ZONING ORDINANCE

**APPLICANT:** AAA SIGNS, INC.

**SUBJECT:** Applicant is requesting Variances (Sec. 4-205) in order install façade signage 1) exceeding the allowable square footage; and 2) allow internally lit signage, within a T-6 Urban Core Transect District. Location of the request is **911 N. Lakeshore Drive**.

**STAFF FINDINGS:** The on-site and site plan reviews reveal the applicant is requesting to install multiple façade wall signs for a new restaurant vs. the allowable one single external band sign on the façade of each building and/or one blade sign at each business entrance, façade signage exceeding the 3' height requirement and internally lit signage vs the requirement of externally lit signage in section 2.5.7 of the Lakefront Downtown Development District Ordinance.

#### OTHER BUSINESS

#### ADJOURN

GARY E. HOLLAND  
CELL: 337.654.1705  
E-MAIL: gary@aaasigns.com

# AAA SIGNS

**109 BURGESS DRIVE    BROUSSARD, LA 70518    800.880.5686    FAX - 337.261.0833**

February 11, 2005

Greetings,

RE: 911 North Lakeshore Drive Sign Variance

AAA Signs is requesting a Sign Variance as follows:

- 1) Install two (2) internally illuminated signs on North Elevation of building (Facing I-10) that exceed allowable size.
- 2) Install one (1) NON-illuminated sign on South Elevation of building (Facing Lake Charles) that exceeds allowable size.
- 3) Install one (1) non-illuminated sign on East & West Elevations of building that exceed allowable size.

Note that this property is part of the Cities Lakefront Development and all property withing 500' is owned by the city and this parcel is leased by Crying Eagle Brewery.

Sincerely,



Gary E. Holland

# PROPOSED SIGN SITE PLAN



INTERNALLY ILLUMINATED, SINGLE FACE SIGN WITH ALUMINUM CABINET & DIGITALLY PRINTED FLEX FACE  
**SIGN TYPE A - ONE (1) 271.25 SQ. FT. PRIMARY LOGO SIGN REQUIRED - NORTH ELEVATION**



**SPECIFICATIONS:**

MANUFACTURE AND INSTALL ONE (1) CUSTOM CONTOUR, SINGLE FACE, INTERNALLY ILLUMINATED SIGN WITH FULL ALUMINUM RETURN, BACK, AND RETAINERS, VERTICAL & HORIZONTAL INTERNAL 2" X 4" ALUMINUM CHANNEL BRACES WITH WELDED NUTS, AND WELDED TO BACK OF SIGN FOR INSTALLATION WITH 0.5" DIAMETER ALL-THREAD RODS WITH 2ND 2" X 4" ALUMINUM CHANNEL BRACE FOR "COMPRESSION" MOUNTING TO EXISTING STEEL TUBE SUPPORTS, DIGITALLY PRINTED FLEX FACE, AND INTERNAL LED ILLUMINATION WITH INTERNAL POWER SUPPLIES, RETURN TO HAVE WELDED "LANDING RAIL" FOR INSTALLATION OF FLEX FACE INSTALLATION HARDWARE.

**NOTE:**

ELECTRICAL ROUTING & CONNECTION TO BE MADE BY OTHERS.

**CRYING EAGLE BREWING COMPANY LAKEFRONT** | **SQUARE FOOTAGE**  
**NORTH ELEVATION LOGO SIGN**  
**15.5' X 17.5' = 271.25 SQ. FT.**

**AAA SIGNS**

www.aaasigns.com  
 109 Burgess Drive Broussard, LA 70518  
 PHONE 800.880.5686 337.233.5686 FAX: 337.261.2533

**CLIENT**

**CRYING EAGLE**  
 BREWING COMPANY  
 LAKEFRONT

**DECLARATION**

This is an original unpublished drawing, created by AAA Signs, LLC. It is submitted for your personal use in connection with the project being planned for you by AAA Signs, LLC. It is not to be shown to anyone outside your organization, nor used, reproduced, copied or exhibited in any fashion whatsoever. All or part of this design (except for registered trademarks) remain the property of AAA Signs, LLC.

**CLIENT REVIEW STATUS**

AAA Signs, LLC. requires that an "Approved" drawing be obtained from the client prior to any production release or production release revision.

Approved

Approved as Noted  Revise & Resubmit

Signature: \_\_\_\_\_

Title: \_\_\_\_\_ Date: \_\_\_\_\_

**COLOR SPECIFICATIONS**

- - SIGN CABINET EXTERIOR & RETAINERS | 100% BLACK SEMI-GLOSS
- - SIGN CABINET INTERIOR | WHITE
- 🦅 - FACE DECORATIONS | FLEX FACE DIGITALLY PRINTED GRAPHICS TO MATCH FILE PROVIDED WITH "BLACK" TO BE 100% OPAQUE (BLOCK OUT)
- TBD - REAR MOUNTING BRACES & ALL-THREAD RODS | PTM EXISTING STEEL TUBE UPRIGHTS
- - ILLUMINATION | WHITE LED

**PROJECT INFORMATION**

CRYING EAGLE BREWING COMPANY  
 911 NORTH LAKESHORE DRIVE  
 LAKE CHARLES, LA 70601

DATE: 09.21.24

SALES: GARY E. HOLLAND

DESIGN: CRYING EAGLE-LAKEFRONT

**JOB #240741-01**

**IMPORTANT NOTICE**

UL COMPLIANCE NEC & MANUFACTURING RECOMMENDATIONS. ALL ELECTRICAL PRIMARY CIRCUITS MUST BE DEDICATED ISOLATED CIRCUITS PROVIDED BY CLIENT/OWNER.  
 GC TO PROVIDE ACCESSIBILITY TO REMOTE TRANSFORMERS OR BALLASTS FOR INSTALL AND SERVICE  
 FINAL ELECTRICAL HOOK UP BY OTHERS.

THIS SIGN IS INTENDED TO BE INSTALLED IN ACCORDANCE WITH THE REQUIREMENTS AS PER NEC 2008 ART: 600.6 FBC ELECTRIC CODE AND/OR OTHER APPLICABLE LOCAL CODES. THIS INCLUDES PROPER GROUNDING AND BONDING OF SIGN.

INTERNALLY ILLUMINATED, SINGLE FACE SIGNS WITH ALUMINUM CABINET & FLAT POLYCARBONATE FACES  
**TYPE B - ONE (1) PRIMARY ID SIGN REQUIRED - NORTH ELEVATION**



**SPECIFICATIONS:**

MANUFACTURE AND INSTALL TWO (2) CUSTOM CONTOUR, SINGLE FACE, INTERNALLY ILLUMINATED SIGNS WITH FULL ALUMINUM RETURN, BACK, AND RETAINERS, HORIZONTAL INTERNAL 2" X 4" ALUMINUM CHANNEL BRACES WITH WELDED NUTS, AND WELDED TO BACK OF SIGN FOR INSTALLATION WITH 0.375" DIAMETER ALL-THREAD RODS WITH 2ND 2" X 4" ALUMINUM CHANNEL BRACE FOR "COMPRESSION" MOUNTING TO EXISTING STEEL TUBE SUPPORTS, CLEAR POLYCARBONATE FACES WITH 2ND SURFACE DIGITALLY PRINTED FACE DECORATIONS, INTERNAL LED ILLUMINATION WITH INTERNAL POWER SUPPLIES, SIGN RETURNS TO HAVE WELDED "LANDING RAIL" FOR INSTALLATION OF FACES.

**NOTE:**

ELECTRICAL ROUTING & CONNECTION TO BE MADE BY OTHERS.

**CRYING EAGLE BREWING COMPANY LAKEFRONT** | **SQUARE FOOTAGE**  
**NORTH & SOUTH ELEVATION ID SIGNS**  
**5.9166' X 16.50' = 97.6239 SQ. FT.**

**AAA SIGNS**

www.aasigns.com  
 109 Burgess Drive Broussard, LA 70518  
 PHONE 800.880.5686 337.233.5686 FAX: 337.261.2533

**CLIENT**



**DECLARATION**

This is an original unpublished drawing, created by AAA Signs, LLC. It is submitted for your personal use in connection with the project being planned for you by AAA Signs, LLC. It is not to be shown to anyone outside your organization, nor used, reproduced, copied or exhibited in any fashion whatsoever. All or part of this design (except for registered trademarks) remain the property of AAA Signs, LLC.

**CLIENT REVIEW STATUS**

AAA Signs, LLC. requires that an "Approved" drawing be obtained from the client prior to any production release or production release revision.

Approved  
 Approved as Noted  Revise & Resubmit

Signature: \_\_\_\_\_ Date: \_\_\_\_\_

**COLOR SPECIFICATIONS**

- - SIGN CABINET EXTERIOR & RETAINERS | 100% BLACK SEMI-GLOSS
- - SIGN CABINET INTERIOR | WHITE
- 🖨️ - FACE DECORATIONS | DIGITALLY PRINTED GRAPHICS TO MATCH FILE PROVIDED WITH "BLACK" TO BE 100% OPAQUE (BLOCK OUT)
- 🔩 - REAR MOUNTING BRACES & ALL-THREAD RODS | PTM EXISTING STEEL TUBE UPRIGHTS
- 💡 - ILLUMINATION | WHITE LED

**PROJECT INFORMATION**

CRYING EAGLE BREWING COMPANY  
 911 NORTH LAKESHORE DRIVE  
 LAKE CHARLES, LA 70601

DATE: 02.10.25

SALES: GARY E. HOLLAND

DESIGN: CRYING EAGLE-LAKEFRONT

**JOB #240741-01**

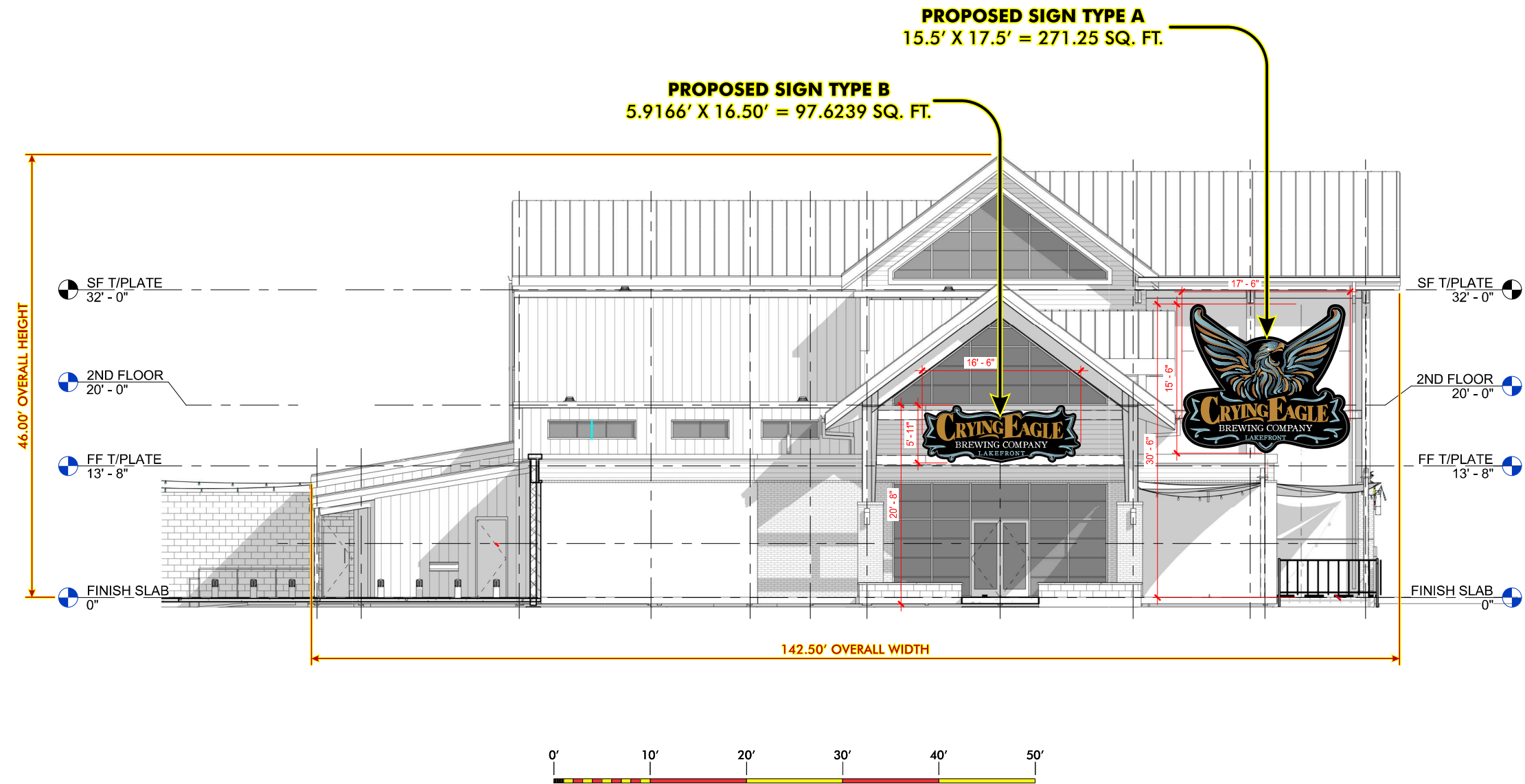
**IMPORTANT NOTICE**

UL COMPLIANCE NEC & MANUFACTURING RECOMMENDATIONS. ALL ELECTRICAL PRIMARY CIRCUITS MUST BE DEDICATED ISOLATED CIRCUITS PROVIDED BY CLIENT/OWNER.  
 GC TO PROVIDE ACCESSIBILITY TO REMOTE TRANSFORMERS OR BALLASTS FOR INSTALL AND SERVICE  
 FINAL ELECTRICAL HOOK UP BY OTHERS.

THIS SIGN IS INTENDED TO BE INSTALLED IN ACCORDANCE WITH THE REQUIREMENTS AS PER NEC 2008 ART: 600.6 FBC ELECTRIC CODE AND/OR OTHER APPLICABLE LOCAL CODES. THIS INCLUDES PROPER GROUNDING AND BONDING OF SIGN.



# PROPOSED NORTH ELEVATION SIGNAGE



NON-ILLUMINATED, SINGLE FACE SIGN FLAT ALUMINUM SIGN  
**TYPE C - ONE (1) SECONDARY ID SIGN REQUIRED - SOUTH ELEVATION**



**AAA SIGNS**

www.aasigns.com  
 109 Burgess Drive Broussard, LA 70518  
 PHONE 800.880.5686 337.233.5686 FAX: 337.261.2533

**CLIENT**



**DECLARATION**

This is an original unpublished drawing, created by AAA Signs, LLC. It is submitted for your personal use in connection with the project being planned for you by AAA Signs, LLC. It is not to be shown to anyone outside your organization, nor used, reproduced, copied or exhibited in any fashion whatsoever. All or part of this design (except for registered trademarks) remain the property of AAA Signs, LLC.

**CLIENT REVIEW STATUS**

AAA Signs, LLC. requires that an "Approved" drawing be obtained from the client prior to any production release or production release revision.

Approved  
 Approved as Noted  Revise & Resubmit

Signature: \_\_\_\_\_ Date: \_\_\_\_\_

**COLOR SPECIFICATIONS**

- TBD** - BACK OF SIGN & MOUNTING HARDWARE | TBD - MATCH MOUNTING STEEL
- CRYING EAGLE** - FACE DECORATIONS | DIGITALLY PRINTED GRAPHICS TO MATCH FILE PROVIDED

**PROJECT INFORMATION**

CRYING EAGLE BREWING COMPANY  
 911 NORTH LAKESHORE DRIVE  
 LAKE CHARLES, LA 70601

DATE: 02.10.25

SALES: GARY E. HOLLAND

DESIGN: CRYING EAGLE-LAKEFRONT

**JOB #240741-01**

**IMPORTANT NOTICE**

UL COMPLIANCE NEC & MANUFACTURING RECOMMENDATIONS. ALL ELECTRICAL PRIMARY CIRCUITS MUST BE DEDICATED ISOLATED CIRCUITS PROVIDED BY CLIENT/OWNER.  
 GC TO PROVIDE ACCESSIBILITY TO REMOTE TRANSFORMERS OR BALLASTS FOR INSTALL AND SERVICE  
 FINAL ELECTRICAL HOOK UP BY OTHERS.  
 THIS SIGN IS INTENDED TO BE INSTALLED IN ACCORDANCE WITH THE REQUIREMENTS AS PER NEC 2008 ART: 600.6 FBC ELECTRIC CODE AND/OR OTHER APPLICABLE LOCAL CODES. THIS INCLUDES PROPER GROUNDING AND BONDING OF SIGN.

**SPECIFICATIONS:**

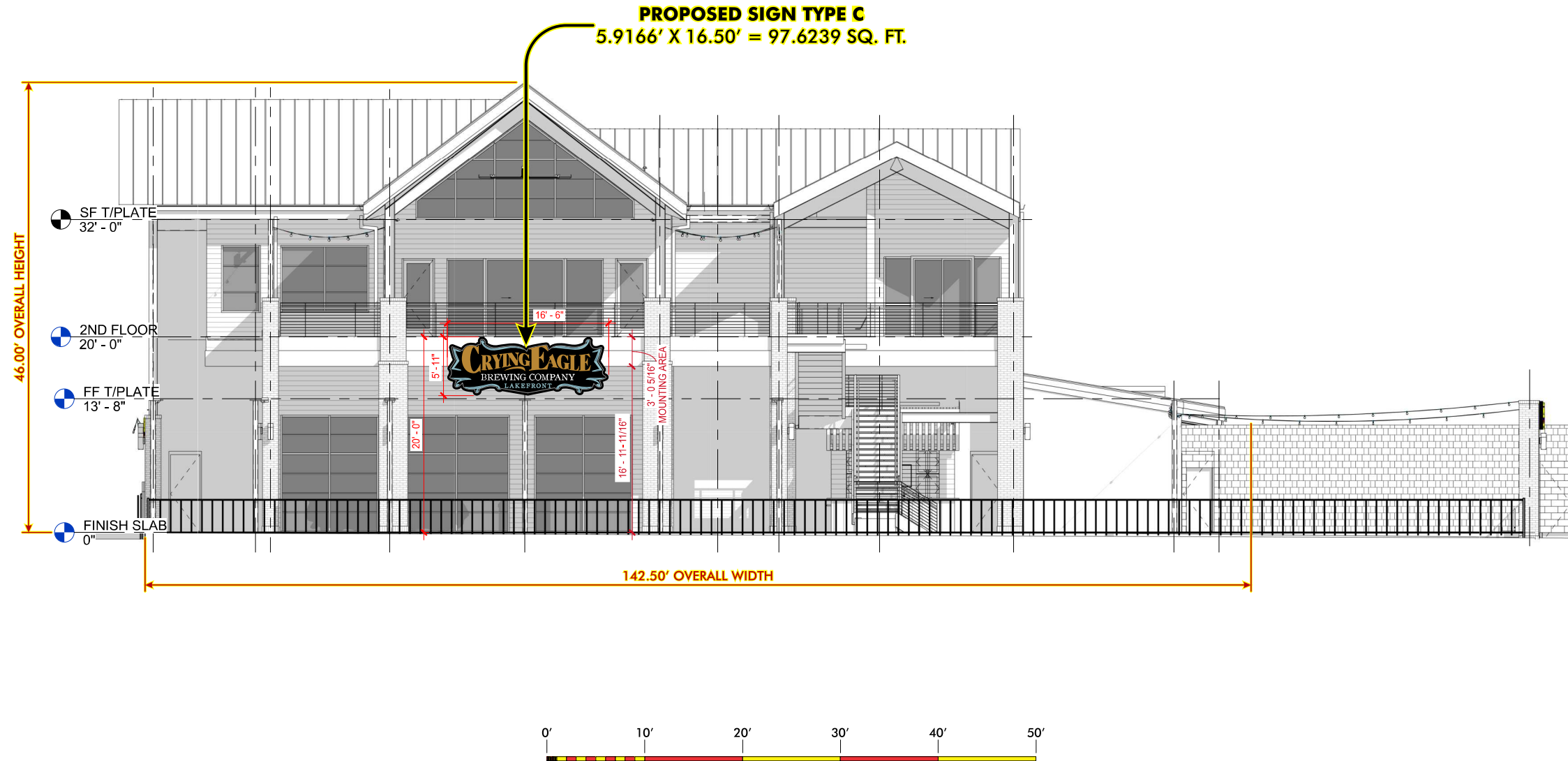
MANUFACTURE AND INSTALL TWO (2) CUSTOM CONTOUR, NON-ILLUMINATED SIGNS WITH 0.125" THICK FLAT ALUMINUM FACES WITH DIGITAL DECAL FACE DECORATIONS, WELDED ALUMINUM TABS WITH WELDED NUTS ON REAR OF FACE TO ACCEPT 0.375" DIAMETER ALL-THREAD RODS WITH 2" X 4" ALUMINUM CHANNEL FOR "COMPRESSION" INSTALLATION ON EXISTING STEEL TUBE UPRIGHTS.

**SQUARE FOOTAGE**

**SOUTH ELEVATION ID SIGN**

**5.9166' X 16.50' = 97.6239 SQ. FT.**

# PROPOSED SOUTH ELEVATION SIGNAGE





NON-ILLUMINATED, SINGLE FACE SIGNS WITH DIGITAL DECAL FACE DECORATIONS  
**TYPE D - TWO (2) SECONDARY ENTRANCE ID SIGNS REQUIRED - EAST AND WEST ELEVATIONS**



**SPECIFICATIONS:**

MANUFACTURE AND INSTALL TWO (2) CUSTOM CONTOUR, NON-ILLUMINATED SIGNS WITH 0.125" THICK FLAT ALUMINUM FACES WITH DIGITAL DECAL FACE DECORATIONS, WELDED ALUMINUM TABS WITH WELDED NUTS ON REAR OF FACE TO ACCEPT 0.375" DIAMETER ALL-THREAD RODS WITH 2" X 4" ALUMINUM CHANNEL FOR "COMPRESSION" INSTALLATION ON EXISTING STEEL TUBE UPRIGHTS.

	<b>SQUARE FOOTAGE</b>
<b>EAST &amp; WEST ELEVATION ID SIGNS</b>	
<b>3.00' X 7.8333' = 23.499 SQ. FT.</b>	

**AAA SIGNS**

www.aasigns.com  
 109 Burgess Drive Broussard, LA 70518  
 PHONE 800.880.5686 337.233.5686 FAX: 337.261.2533

**CLIENT**



**DECLARATION**

This is an original unpublished drawing, created by AAA Signs, LLC. It is submitted for your personal use in connection with the project being planned for you by AAA Signs, LLC. It is not to be shown to anyone outside your organization, nor used, reproduced, copied or exhibited in any fashion whatsoever. All or part of this design (except for registered trademarks) remain the property of AAA Signs, LLC.

**CLIENT REVIEW STATUS**

AAA Signs, LLC. requires that an "Approved" drawing be obtained from the client prior to any production release or production release revision.

Approved  
 Approved as Noted  Revise & Resubmit

Signature: \_\_\_\_\_ Date: \_\_\_\_\_

**COLOR SPECIFICATIONS**

- TBD** - BACK OF SIGN & MOUNTING HARDWARE | TBD - MATCH MOUNTING STEEL
- TBD** - FACE DECORATIONS | DIGITALLY PRINTED GRAPHICS TO MATCH FILE PROVIDED

**PROJECT INFORMATION**

CRYING EAGLE BREWING COMPANY  
 911 NORTH LAKESHORE DRIVE  
 LAKE CHARLES, LA 70601

DATE: 02.10.25

SALES: GARY E. HOLLAND

DESIGN: CRYING EAGLE-LAKEFRONT

**JOB #240741-01**

**IMPORTANT NOTICE**

UL COMPLIANCE NEC & MANUFACTURING RECOMMENDATIONS. ALL ELECTRICAL PRIMARY CIRCUITS MUST BE DEDICATED ISOLATED CIRCUITS PROVIDED BY CLIENT/OWNER.  
 GC TO PROVIDE ACCESSIBILITY TO REMOTE TRANSFORMERS OR BALLASTS FOR INSTALL AND SERVICE  
 FINAL ELECTRICAL HOOK UP BY OTHERS.

THIS SIGN IS INTENDED TO BE INSTALLED IN ACCORDANCE WITH THE REQUIREMENTS AS PER NEC 2008 ART: 600.6 FBC ELECTRIC CODE AND/OR OTHER APPLICABLE LOCAL CODES. THIS INCLUDES PROPER GROUNDING AND BONDING OF SIGN.



# PROPOSED EAST ELEVATION SIGNAGE



# PROPOSED WEST ELEVATION SIGNAGE

**PROPOSED SIGN TYPE D**  
3.0' X 7.833' = 23.50 SQ. FT.

