

SALLIER STREET - EAST BOUND

Capital Project No. LR 0002

West Sallier Reconstruction – Marine Street to Lake Street



Meyer & Associates, Inc.
Consulting Engineers



LAKE STREET & SALLIER STREET INTERSECTION



Meyer & Associates, Inc.
Consulting Engineers



RMG
RANDY M. GOODLOE, AIA, APAC
A Professional Architecture Corporation

SALLIER STREET - RAILROAD CROSSING



Meyer & Associates, Inc.
Consulting Engineers



RMG
RANDY M. GOODLOE, AIA, APAC
A Professional Architectural Corporation

LAKE STREET & SALLIER STREET INTERSECTION



LAKE STREET & SALLIER STREET INTERSECTION



Meyer & Associates, Inc.
Consulting Engineers



RMG
RANDY M. GOODLOE, AIA, APAC
A Professional Architectural Corporation

SALLIER STREET - WEST BOUND



Meyer & Associates, Inc.
Consulting Engineers



RANDY M. GOODLOE, AIA, APAC
A Professional Architectural Corporation

SALLIER STREET - WEST BOUND



Meyer & Associates, Inc.
Consulting Engineers



SALLIER STREET - EAST BOUND



Meyer & Associates, Inc.
Consulting Engineers



RMG
RANDY M. GOODLOE, AIA, APAC
A Professional Architectural Corporation

SALLIER STREET - EAST BOUND

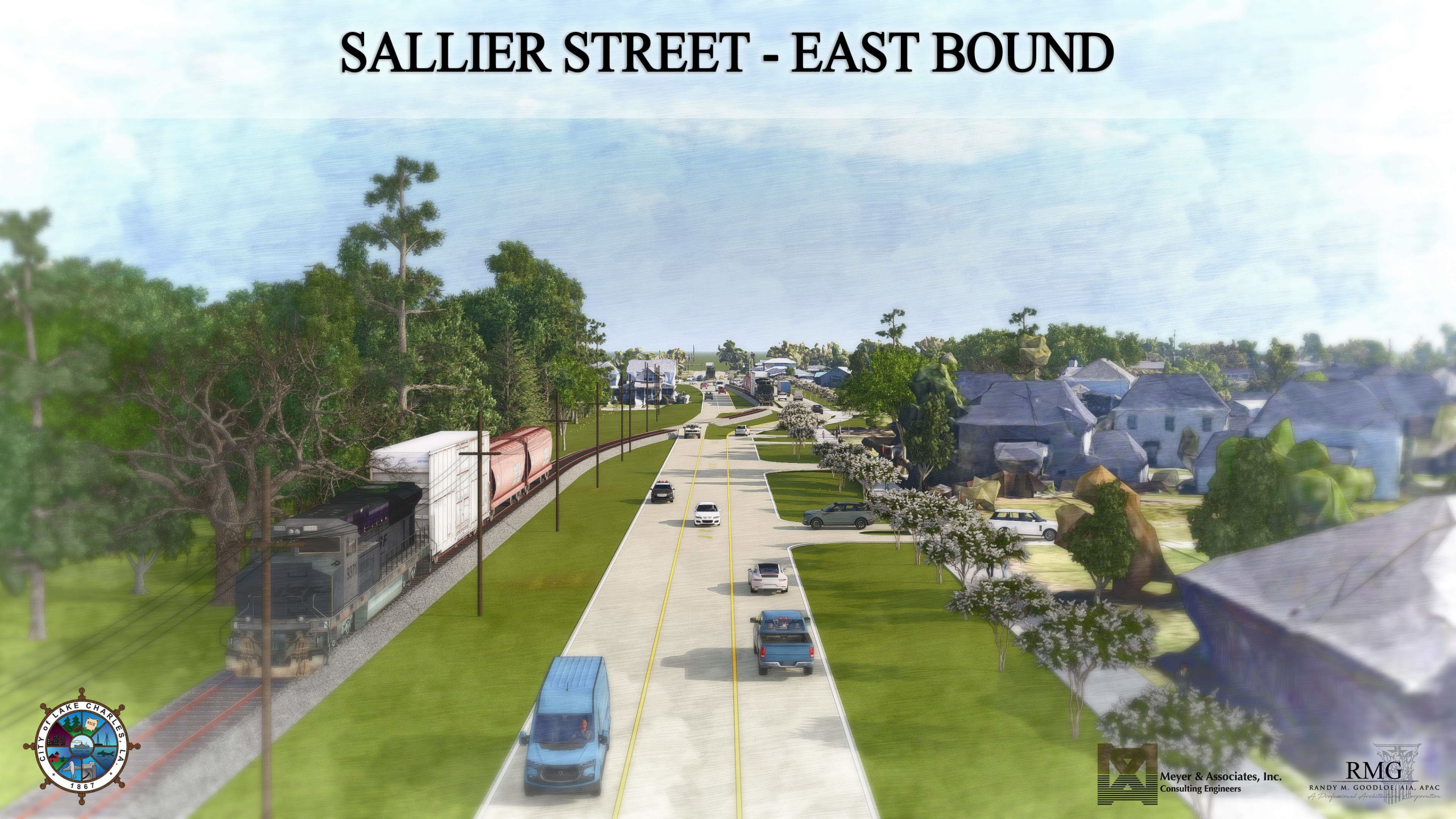


Meyer & Associates, Inc.
Consulting Engineers



RANDY M. GOODLOE, AIA, APAC
A Professional Architectural Corporation

SALLIER STREET - EAST BOUND



Meyer & Associates, Inc.
Consulting Engineers



RANDY M. GOODLOE, AIA, APAC
A Professional Architectural Corporation